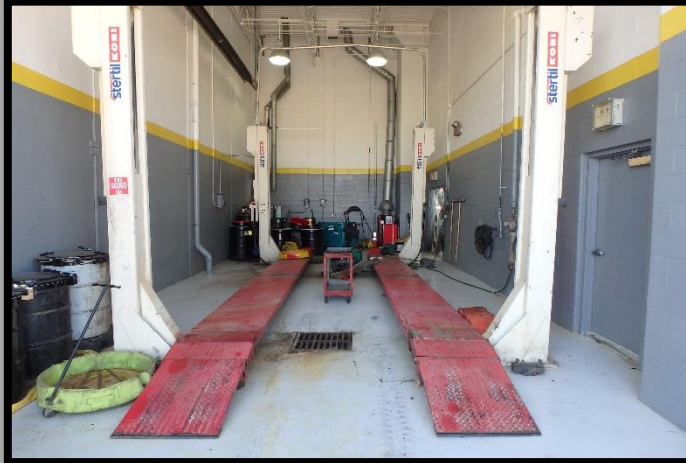


DO YOUR PART—KEEP POLLUTION OUT OF STORM DRAINS & WATERWAYS

FLEET MAINTENANCE



Vehicle & Equipment Maintenance/Cleaning

- Perform maintenance and cleaning in designated areas.



Parts Cleaning

- Wash parts in designated cleaning stations.
- Make sure parts fully drain before removing them.



Leaking Vehicles

- Park leaking vehicles under cover.
- Use a drip pan or absorbents for collection.



Fueling

- Inspect fueling areas often, and clean as needed.
- Don't top off the fuel tank!
- Know the locations of the emergency shut-off button and spill kit.

REPORT POLLUTION & ILLEGAL DUMPING

Be our eyes—look for and report signs of water pollution.

Signs include odor, an oily sheen on the water's surface, colored or cloudy water, dead or dying fish, and excess trash.

Report spills and issues to the City of Woodbranch Village 281-399-3979.



DO YOUR PART—KEEP POLLUTION OUT OF STORM DRAINS & WATERWAYS

FLEET MAINTENANCE



Spills

- Clean up spills immediately.
- Use a drip pan or absorbents for collection.
- Place spent absorbents into appropriately labeled disposal containers.



Cleaning Outside Work Areas

- Clean regularly. Take extra precaution if rain is forecast.
- Use dry methods such as sweeping—don't hose down the work area.
- Make sure that trash receptacles are emptied as needed.



Cleaning Shop

- Use dry methods for cleaning when possible.
- Dispose of mop water properly. It should go into the sanitary sewer system.
- Promptly dispose of waste.



Used Fluid, Filter, & Battery Disposal

- Store items under cover or in secondary containment.
- Store used fluids in labeled containers.
- Recycle or properly dispose of used fluids, hydraulic filters, and batteries.



REPORT POLLUTION & ILLEGAL DUMPING

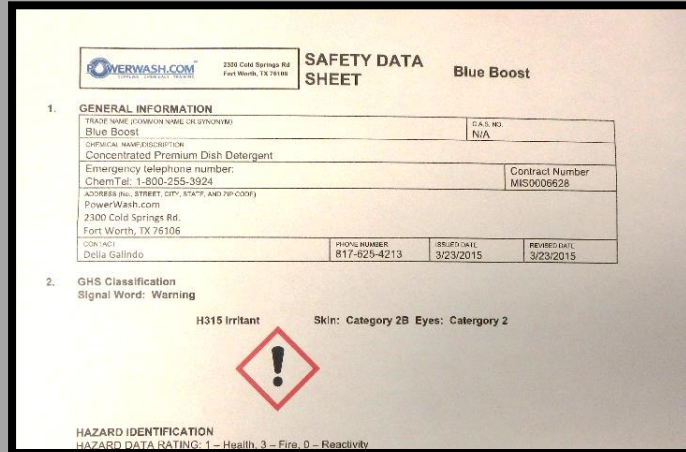
Be our eyes—look for and report signs of water pollution.

Signs include odor, an oily sheen on the water's surface, colored or cloudy water, dead or dying fish, and excess trash.

Report spills and issues to the City of Woodbranch Village 281-399-3979.

DO YOUR PART—KEEP POLLUTION OUT OF STORM DRAINS & WATERWAYS

MATERIALS STORAGE



Instructions & Procedures

- Follow label or safety data sheet (SDS) instructions and established procedures.
- Contact supervisors with questions.



Safe Materials Storage

- Store materials away from high-traffic areas (ideally, indoors in sealed containers).
- Use original or clearly labeled replacement containers.



Containers

- Keep containers closed or sealed when not in use.
- Inspect containers regularly.
- Replace any damaged containers.



Spill-Trapping Devices

- Store materials on a spill containment base.
- Border storage areas with a curb, berm, or similar method.



REPORT POLLUTION & ILLEGAL DUMPING

Be our eyes—look for and report signs of water pollution.

Signs include odor, an oily sheen on the water's surface, colored or cloudy water, dead or dying fish, and excess trash.

Report spills and issues to the City of Woodbranch Village 281-399-3979.

DO YOUR PART—KEEP POLLUTION OUT OF STORM DRAINS & WATERWAYS

SPILLS

SDS Safety Data Sheet	
Revision : Apr-27-2015	
CETAMINE F 365	
1 IDENTIFICATION OF THE SUBSTANCE OR MIXTURE AND OF THE SUPPLIER	
Product Name:	CETAMINE F 365
Product Use:	Corrosion inhibitor for water system
Manufacturer:	Kurita America, Inc. 16850 Diana Lane, Suite B 104, Houston, Texas 77058
Contact:	Chemical Group
Phone:	281-998-3900
FAX:	281-998-3903
Emergency Telephone:	CHEMTREC (Health/ Transport/ Regulatory) 1-800-424-9300 1-800-424-8802
2 HAZARDS IDENTIFICATION	
Classification:	Corrosive liquid, Hazardous mixture

Instructions & Procedures

- Follow cleanup instructions specified on the label or safety data sheet (SDS) and established procedures.
- Contact supervisors with questions.



Containment

- Isolate and stop the leak if possible.
- Collect liquid spills with a drip pan or absorbents.
- Protect inlets if spills may enter a storm drain.
- Cover a powder spill with plastic sheeting to keep it from spreading.



Cleanup

- Immediately clean up nonhazardous spills.
—For liquid spills: Use absorbents.
—For all spills: Don't hose down the spill.
- Notify proper personnel to clean up hazardous spills.



Disposal

- If spilled dry material is usable, put it in the original or properly marked container.
- Otherwise, follow proper disposal procedures.



REPORT LARGE OR HAZARDOUS SPILLS

Immediately report large or hazardous spills to the City of Woodbranch Village 281-399-3979.

DO YOUR PART—KEEP POLLUTION OUT OF STORM DRAINS & WATERWAYS

PARKS & GROUND MAINTENANCE: CHEMICALS

AGMAX INDUSTRIES LTD
Glyphosate 360
SAFETY DATA SHEET

Issue Date: September 09

I. Product and Company Information

Product Name: Agmax Glyphosate 360
Proper Shipping Name: Glyphosate 360
Synonyms:
Recommended Use: Control of most annual and perennial grasses and broadleaf weeds
Manufacturer: Agmax Industries Limited
Address: 47 Allens Road, East Tamaki, Manukau City 2141, Auckland
Telephone Number: 09 271 5290
Facsimile Number: 09 271 5293
0508 524 824 Monday – Friday 8:00 am – 5:00 pm
NZ Emergency Number: 0800 243 622 (24 hours)

Instructions & Procedures

- Follow label or safety data sheet (SDS) instructions and established procedures related to chemical use, safety, storage, and disposal.
- Contact supervisors with questions.



Choosing the Right Product

- Use nontoxic products when possible.
- Use chemicals only as needed.
- Select the appropriate product for the problem.



Mixing & Applying Chemicals

- Mix chemicals at a proper location (such as on pavement away from storm drains).
- Mix only the amount required.
- Only apply if weather permits (no rain forecast, not windy).
- Avoid sensitive areas such as waterbodies or inlets.
- Apply only where needed.
- Avoid overspray.



Leaks & Spills

- Regularly inspect vehicles and application equipment for leaks. Make sure to check hoses and seals.
- Clean up spills immediately.
- Use a drip pan or absorbents for collection.
- Sweep up dry material.



BE OUR EYES

Report leaks, spills, and faulty equipment.
Report any suspected issues with chemical applications to the licensed pesticide applicator.
City of Woodbranch Village 281-399-3979.

DO YOUR PART—KEEP POLLUTION OUT OF STORM DRAINS & WATERWAYS

PARKS & GROUND MAINTENANCE: SOIL & DEBRIS MANAGEMENT



Clippings & Trimmings

- Mow grass as high as possible. Leave clippings on the lawn, out of roadways.
- Sweep or blow clippings and trimmings onto the grass—or compost them.



Storm Drain Inlets

- Remove litter and debris from inlets.
- Gather clippings and other debris, and dispose of them properly—*not* down the storm drain.



Compost & Mulch

- Use compost as a soil amendment, or shred leaves and add to flower beds as mulch.



Soil Management

- Limit soil erosion.
 - For bare areas, plant vegetation.
 - For landscaped areas, use mulch or matting.



REPORT POLLUTION & ILLEGAL DUMPING

Be our eyes—look for and report signs of water pollution.

Signs include odor, an oily sheen on the water's surface, colored or cloudy water, dead or dying fish, and excess trash.

Report spills and issues to the City of Woodbranch Village 281-399-3979.

DO YOUR PART—KEEP POLLUTION OUT OF STORM DRAINS & WATERWAYS

DRAINAGE MAINTENANCE: INLETS, CATCH BASINS



Inlets & Structural Controls

- Maintain and inspect inlets and structural controls as required.



Litter & Debris Removal

- Properly dispose of litter and debris removed from inlets.



Storm Drain Markers

- Apply storm drain markers to inlets that show evidence of dumping.



REPORT POLLUTION & ILLEGAL DUMPING

Be our eyes—look for and report signs of water pollution.

Signs include odor, an oily sheen on the water's surface, colored or cloudy water, dead or dying fish, and excess trash.

Report spills and issues to the City of Woodbranch Village 281-399-3979.

DO YOUR PART—KEEP POLLUTION OUT OF STORM DRAINS & WATERWAYS

SOIL & EROSION CONTROL



Recovered Soil

- Soil may be used on site as fill or stockpiled for another land application.



Stockpiles

- Locate stockpiles out of the street and away from flowing water or runoff.
- Capture sediment using appropriate methods.
- Cover soil and sand stockpiles to prevent erosion.



Exposed Soils

- Apply grass seed to prevent erosion.
- Protect channels by using turf reinforcement mats until vegetation is established.



Erosion & Sediment Control

- Use erosion control methods such as erosion control blankets, vegetation, or mulching.
- Use sediment control methods such as mulch berms.



REPORT POLLUTION & ILLEGAL DUMPING

Be our eyes—look for and report signs of water pollution.

Signs include odor, an oily sheen on the water's surface, colored or cloudy water, dead or dying fish, and excess trash.

Report spills and issues to the City of Woodbranch Village 281-399-3979.

DO YOUR PART—KEEP POLLUTION OUT OF STORM DRAINS & WATERWAYS

STREETS MAINTENANCE: CLEANUP



Trucks, Equipment, & Tools

- Clean trucks, equipment, and tools in designated wash facilities.



Cleaning Equipment Outdoors

- When wash facilities are not available, clean equipment over catch trays or absorbents spread on an impervious surface.



Absorbent Cleanup

- Promptly sweep up spent absorbents and dispose of them according to established procedures.



REPORT POLLUTION & ILLEGAL DUMPING

Be our eyes—look for and report signs of water pollution.

Signs include odor, an oily sheen on the water's surface, colored or cloudy water, dead or dying fish, and excess trash.

Report spills and issues to the City of Woodbranch Village 281-399-3979.

DO YOUR PART—KEEP POLLUTION OUT OF STORM DRAINS & WATERWAYS

STREETS MAINTENANCE: PAVEMENT REPAIR



Saw-Cutting Operations

- Vacuum slurry and cuttings while working.
- Dispose of slurry according to established procedures.



Asphalt Stockpiles

- Locate stockpiles on a paved surface.
- Cover the stockpiles to prevent contact with rain.



Stormwater Protection

- Protect inlets while working.
- Use appropriate erosion and sediment control methods.
- Inspect control methods as needed.



Asphalt Patching

- Mix only the necessary amount.
- Use biodegradable products rather than diesel.
- Sweep up and properly dispose of all spent material.

REPORT POLLUTION & ILLEGAL DUMPING

Be our eyes—look for and report signs of water pollution.

Signs include odor, an oily sheen on the water's surface, colored or cloudy water, dead or dying fish, and excess trash.

Report spills and issues to the City of Woodbranch Village 281-399-3979.



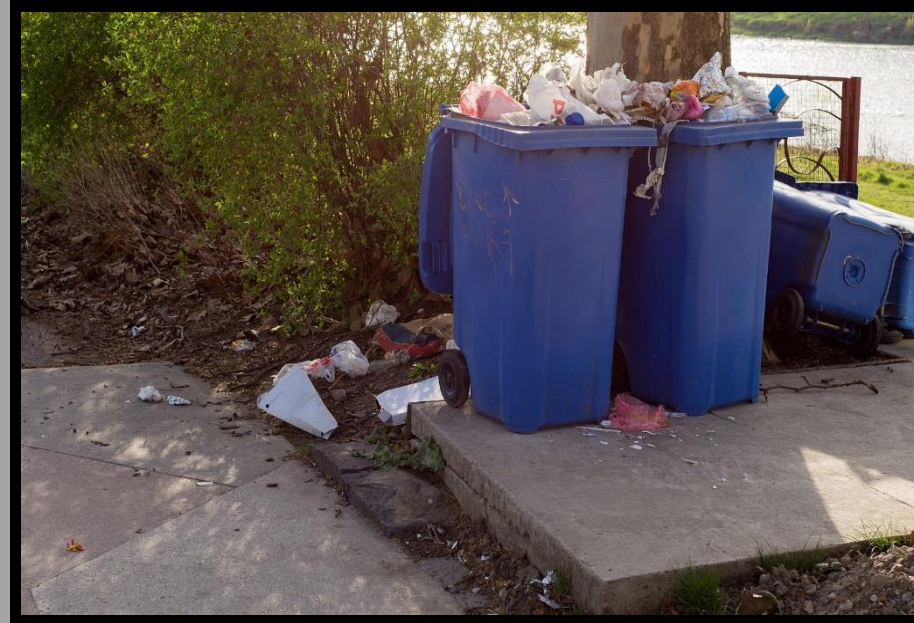
DO YOUR PART—KEEP POLLUTION OUT OF STORM DRAINS & WATERWAYS

SOLID WASTE OPERATIONS: TRASH COLLECTION



Liquid & Hazardous Waste

- Do not pick up liquid waste, such as used motor oil, paint, antifreeze, cooling liquids, and cooking oil.
- Do not pick up flammables, toxic waste, or explosives, such as used batteries, solvents and fuels, pesticides and fertilizers, fireworks and ammunition, fluorescent bulbs, and pool chemicals.
- Notify residents about household waste collection opportunities.



Litter Awareness

- Notify residents of persistent problems with scattered trash.
- Watch the area around the hopper and avoid leaving litter behind.
- Pick up any trash that falls from the truck during compaction.
- Cover open-topped trucks or roll-off containers with tarps.



Spills

- Carry spill kits on collection trucks and service vehicles. Kits should include brooms, shovels, absorbents, pop-up pools, and gloves.
- Clean up spills immediately.



REPORT POLLUTION & ILLEGAL DUMPING

Be our eyes—look for and report signs of water pollution.

Signs include odor, an oily sheen on the water's surface, colored or cloudy water, dead or dying fish, and excess trash.

Report spills and issues to the City of Woodbranch Village 281-399-3979.

DO YOUR PART—KEEP POLLUTION OUT OF STORM DRAINS & WATERWAYS

SOLID WASTE VEHICLE OPERATION



Leaks & Spills

- Check vehicles frequently for leaking fluids. Notify supervisors of major leaks.
- If a major leak occurs, take steps to stop the leak if possible. Contain the leak using absorbents.
- Immediately clean up spills.



Malfunctioning Equipment

- Report any malfunctioning equipment to supervisors.



Washing Vehicles

- Wash collection trucks only in facilities where wash water either drains to the sanitary sewer system or is collected and recycled.



Hopper Drain

- Make sure that hopper drain plugs are always sealed during collection.

REPORT POLLUTION & ILLEGAL DUMPING

Be our eyes—look for and report signs of water pollution.

Signs include odor, an oily sheen on the water's surface, colored or cloudy water, dead or dying fish, and excess trash.

Report spills and issues to the City of Woodbranch Village 281-399-3979.



DO YOUR PART—KEEP POLLUTION OUT OF STORM DRAINS & WATERWAYS

WATER MAIN REPAIR / DEWATERING



Stormwater Protection

- Protect inlets while dewatering for sediment removal.
- Use appropriate erosion and sediment control methods.



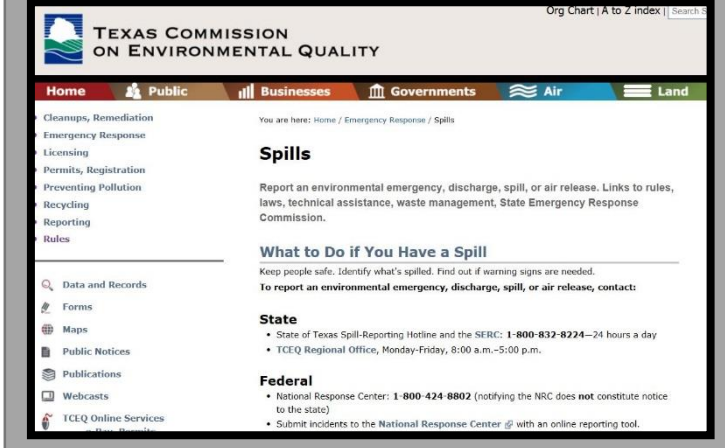
Dechlorination

- Potable water releases must be dechlorinated.



Cleanup

- At the end of the discharge event, dechlorination agents must be removed.
- Clean up sediment from the street and inlet protection.
- Use a street sweeper if needed.
- Do not wash sediments down the storm drain.



Reporting

- Report spills, accidental discharges, and fish kills to supervisors immediately.
- Supervisors will report appropriate spills to TCEQ within 24 hours, and will report fish kills to TCEQ and TPWD immediately.



REPORT POLLUTION & ILLEGAL DUMPING

Be our eyes—look for and report signs of water pollution.

Signs include odor, an oily sheen on the water's surface, colored or cloudy water, dead or dying fish, and excess trash.

Report spills and issues to the City of Woodbranch Village 281-399-3979.